

Your Wi-Fi 6 (802.11ax) Checklist

26b
by 2020

Wi-Fi 6, or 802.11ax, is an exciting new step for wireless LANs. Wi-Fi is the primary access method for networks, and that trend will only rise as the number of Wi-Fi devices is predicted to grow to 26 billion by 2020.

What will Wi-Fi 6 do for my network?

Wi-Fi 6 delivers higher effective speeds and enables new business models and use cases, including:



Support for new applications and outcomes such as enterprise-grade 4K and 8K video or augmented or virtual reality

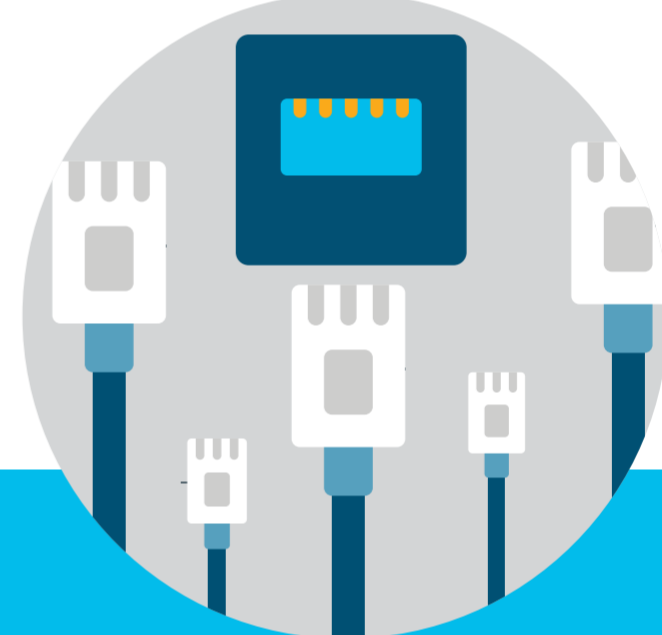


Seamless connectivity with an increase in throughput



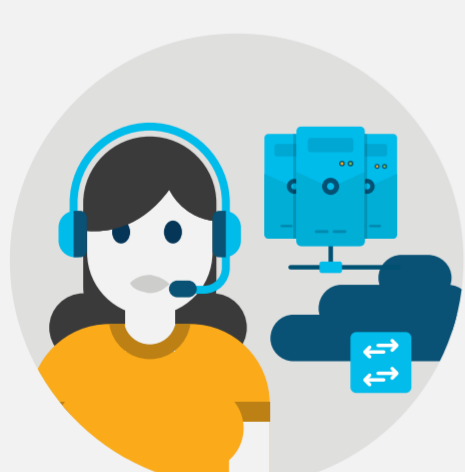
Increased network capacity to address the IoT explosion

Determine whether your wired network can carry Wi-Fi 6's increased traffic.

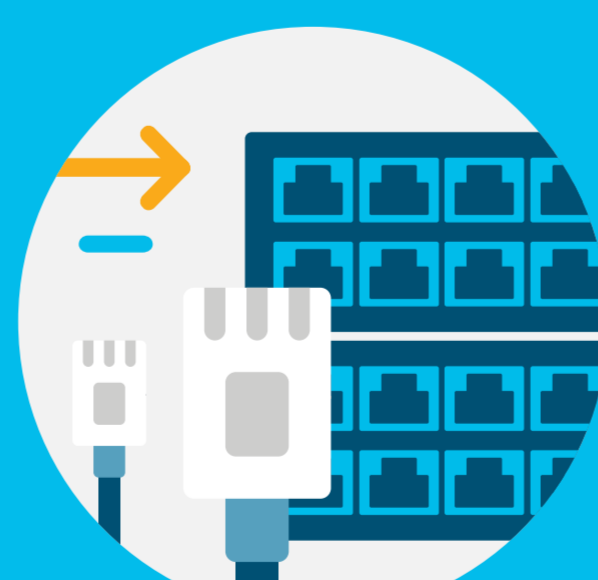


With three times the performance of 802.11ac, Wi-Fi 6 will drive more capacity on Ethernet cables beyond 1 Gigabit. Consider upgrading to switches that support Multigigabit and upgrading from PoE to PoE+ or Cisco UPOE®.

Prepare for more Wi-Fi 6 clients on the network.



More clients means more complexity. We recommend Cisco DNA solutions such as [SD-Access](#), [Cisco DNA Assurance](#), and the new [Cisco® Catalyst® 9800 Series Wireless Controllers](#), which are Wi-Fi 6 ready.



Cisco wants to do right by our customers, so get your network ready for the innovations that Wi-Fi 6 will offer. Outfitting your network with the new Cisco Catalyst 9800 Series controllers is the best place to start, as they have the right performance for any enterprise network.

Get more information on

Wi-Fi 6 (802.11ax)